

# KAPHAPHYSIO®



INTELECT PULS 50V

VIBRATION

INTELECT PULS **50V**

RADIAL SHOCKWAVE

# Vibration & Pneumatic shockwave

For Chronic Pain & Acute Conditions



## Vibration

Relaxes the muscles surrounding the pain point.



## Pneumatic shockwave

Targeting deep tissue pain points.



### VIBRATION

TYPE

Airpressure

MAX INTENSITY

2 bar

FREQUENCY

1-50Hz

### RADIAL SHOCKWAVE

TYPE

Airpressure

FREQUENCY

1-21Hz

MAX INTENSITY

10 bar

BULLET LIFESPAN

3 Million shots

DIMENSION

475X370X256MM

# New Software Design

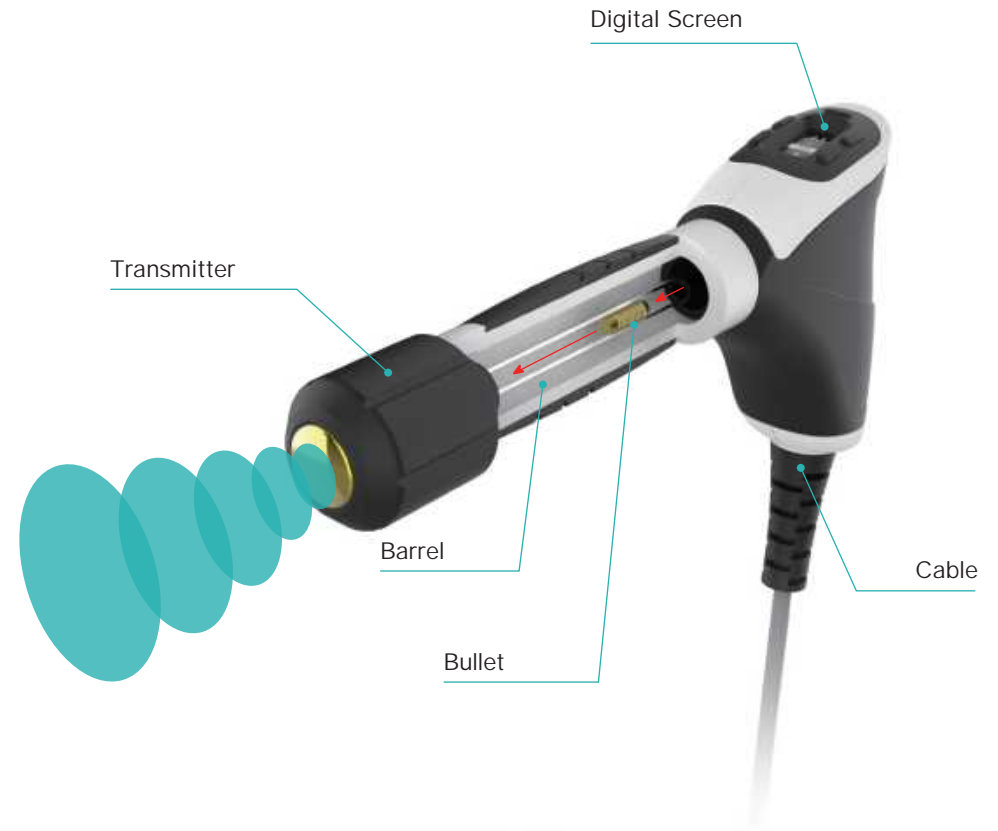
**13.3-INCH** high-definition touchscreen enables precise parameter control. Featuring accurate energy adjustment, it maintains exceptional image clarity even when viewed from wide angles.



# Pneumatic Shockwave

Shock wave therapy uses high-energy shock waves to treat diseases and injuries. Due to its higher energy output and deeper sound wave penetration, shockwave therapy can be effective for breaking up any calcifications or scar tissue that may be contributing to pain conditions such as plantar fasciitis, tennis elbow, rotator cuff, and other chronic musculoskeletal pain.

//



RSWT generates acoustic waves via compressed gas propulsion ( maximum 10 bar ). A solenoid valve rapidly releases gas into a cylindrical chamber, accelerating a tungsten or steel projectile to velocities of 5–25 m/s. Upon impact with a metal applicator tip (diameter: 6–35mm), kinetic energy converts to radial stress waves (frequency 1–21Hz).

## Core Components

- Gas chamber with pressure regulator
- Electromagnetic piston, projectile assembly
- Interchangeable applicator tips

# Radial shockwave Transmitters

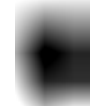
Pain Management For Pain Therapy  
Fascia Specific For Fascia Therapy  
Spine Specific For Spinal Therapy



D6



D10



D15



D20



D25



D35



F-ACTOR4



F-ACTOR3



F-ACTOR2



F-ACTOR1



C35



C28



C20

## Pain Management

6 transmitters specially used for pain management, available for different treatment areas. The upgraded transmitters are more powerful and achieve deeper energy penetration, more conductive to pain treatment.

## Fascia Specific

IP50V gives a gradual release of trigger points and adhesions in the affected muscles and fascia via therapeutic pressure and gliding. This can provide enormous pain relief.

## Spine Specific

Shockwave is a treatment protocol in degenerative osteoporotic neuro-spinal pathology, heterotopic ossification due to spinal cord injury, cervical spondylosis, scoliosis, sacroiliitis, and coccydynia.

# Vibration

As a non-pharmacological treatment method, therapeutic vibration helps alleviate muscle tension and eliminate trigger points.

The 40mm transmitter accelerates blood and lymphatic circulation within the extracellular matrix of connective tissues and stimulates metabolic activity through vibration therapy. The therapeutic handpiece operates at frequencies of up to 30Hz, ensuring physiologically regulated muscle oscillations.

The 10,20mm transmitter is designed for targeting trigger points and acupuncture points, offering fully complementary radial shockwave therapy. It is particularly suitable for addressing muscle spasms and enhancing proprioception.



## **Unlimited Service Life**

Engineered for permanent use with no lifespan limitations.no consumables

## **40mm Large-Diameter Treatment Head**

Provides significantly greater coverage area per treatment  
Enables more efficient relaxation

## **Maintenance-Free Design**

No regular part replacements needed  
Durable construction ensures long-term reliability

# Vibration & Pneumatic shockwave



Spine treatment



Elbow treatment



Leg treatment



Arm treatment

# Treatment Conditions

Shockwave therapy and Vibe handle are two major modalities for pain-management in physiotherapy clinics to treat various musculoskeletal conditions.



## Chronic musculoskeletal pain and inflammation

### Tendinopathies

Tennis elbow (lateral epicondylitis), golfer's elbow, Achilles tendonitis, rotator cuff tendonitis

### Fasciitis

Plantar fasciitis, lumbar myofasciitis



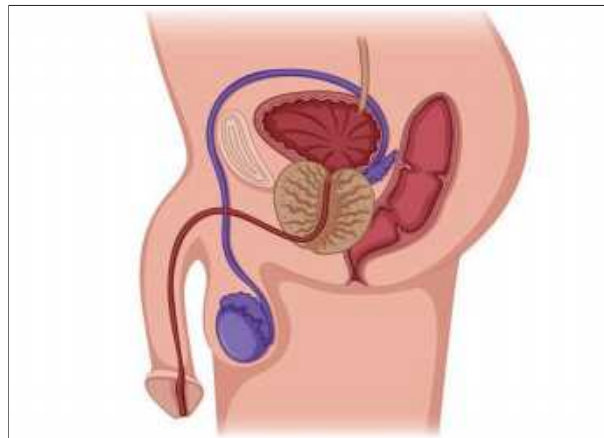
## Joint and soft tissue injuries

### Osteoarthritis (early stage)

Knee arthritis, periarthrosis of the shoulder

### Postoperative/post-traumatic stiffness

Postoperative joint adhesions, muscle fibrosis



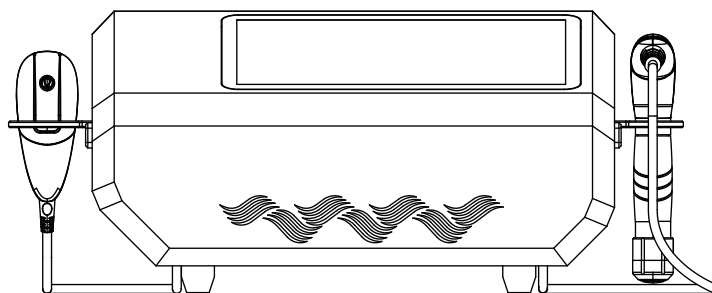
## Other special indications

### Erectile dysfunction (vascular ED)

promote penile angiogenesis and enhances local microcirculation.

### Cellulite (orange peel tissue) improvement

destroy adipose fibrous septa and accelerates the removal of metabolic waste.



## INTELECT PULS ***50V***

---